



MILWAUKEE VOLLEYBALL GAME NOTES

10 NCAA TOURNAMENTS | 14 CONFERENCE CHAMPIONSHIPS | 12 ALL-AMERICANS

MKEPanthers.com || @MKE_Volleyball || #ForTheMKE || Contact: Sean Engel || Email: engelsf@uwm.edu || Office: 414-435-8118

2024 SCHEDULE / RESULTS

Date	Opponent	TV	Time
August			
30	No. 5 STANFORD	ESPN+	L, 0-3
31	vs. Western Illinois		W, 3-1
September			
1	at Northern Illinois	ESPN+	W, 3-2
5	at Southern Methodist	ESPN+	L, 0-3
6	vs. Loyola Marymount		L, 1-3
7	vs. Weber State		W, 3-1
10	at No. 8 Wisconsin	BIG+	L, 0-3
13	ILLINOIS STATE	ESPN+	W, 3-2
14	ST. THOMAS (MINN.)	ESPN+	L, 0-3
15	IOWA	ESPN+	W, 3-1
19	at DePaul	FLOSPORTS	L, 0-3
21	vs. UIC		L, 1-3
27	at Oakland *	ESPN+	W, 3-2
28	at Oakland *		W, 3-2
October			
1	at Green Bay *	ESPN+	6:00 pm
4	IU INDIANAPOLIS *		6:00 pm
5	IU INDIANAPOLIS *		2:00 pm
11	at Northern Kentucky *		5:00 pm
12	at Northern Kentucky *		1:00 pm
18	WRIGHT STATE *	ESPN+	6:00 pm
19	WRIGHT STATE *	ESPN+	2:00 pm
22	at Marquette		7:00 pm
25	YOUNGSTOWN STATE *		6:00 pm
26	YOUNGSTOWN STATE *		2:00 pm
29	GREEN BAY *	ESPN+	6:00 pm
November			
1	at Purdue Fort Wayne *		6:00 pm
2	at Purdue Fort Wayne *		1:00 pm
8	at Robert Morris *		5:00 pm
9	at Robert Morris *		12:00 pm
15	CLEVELAND STATE *	ESPN+	6:00 pm
16	CLEVELAND STATE *	ESPN+	2:00 pm
22	Horizon Quarterfinals ^	ESPN+	TBA
23	Horizon Semifinals ^	ESPN+	TBA
24	Horizon Championship ^	ESPN+	TBA

*Horizon League Game | ^ Horizon Postseason
All times Central

HOME MATCHES IN BOLD

HOME BROADCAST INFORMATION

ESPN+ | ESPN App | @ESPNplus
Matt Menzl | @MMenzl

ESPN+ is offered at a price of \$10.99/month or \$109.99/year.
Fans can sign-up or cancel at anytime.

It is also available as part of a bundle offer that gives subscribers access to Disney+, Hulu, and ESPN+ starting at \$14.99/month.

MILWAUKEE PANTHERS



2024 RECORD

7-7 Overall
2-0 Horizon

ALL-TIME RECORD (Div. I)

593-446 Overall
316-144 Conference

SUSIE JOHNSON

Career Record: 312-266
Record at MKE: 291-219

MATCH 15

OCTOBER 1 at GREEN BAY

Kress Center | Green Bay, Wisconsin | 6:00 pm | ESPN+



PHOENIX

5-9 Overall
2-0 Horizon

ALL-TIME SERIES

Milwaukee Leads, 50-25
Last Meeting: Oct. 31, 2023

ABBEY SUTHERLAND

Career Record: 294-167
Record at Green Bay: 104-84

MATCH 16/17

OCTOBER 4/5 vs. IU INDIANAPOLIS

Klotsche Center | Milwaukee, Wisconsin | 6:00 pm / 2:00 pm



JAGUARS

6-9 Overall
0-2 Horizon

ALL-TIME SERIES

Milwaukee Leads, 11-4
Last Meeting: Oct. 21, 2023

ANDREW KROGER

Career Record: 44-66
Record at IU Indy: 15-29

QUICK HITS

- » Coming off a 2-0 weekend to open Horizon League play, the Panthers return to Wisconsin for to take on the Green Bay Phoenix on the road on Oct. 1 before welcoming in the IU Indianapolis Jaguars to the Klotsche Center this weekend.
- » The Panthers upended the Oakland Golden Grizzlies this past weekend, winning both matches in Michigan in five sets. The Panthers won the Friday match in a reverse sweep, while taking sets two, three, and five to win on Saturday.
- » Madi Malone had a strong week for the Panthers, leading the team with 39 kills for an average of 3.90 per set. Malone added 21 digs and a block while helping the Panthers to a pair of wins.
- » Milica Tomic had 54 assists while Josie Johnson had 53 on the week, Tomic also led all Panther servers with six service aces offensively.
- » On the defensive side, Kara Erdmann had 26 digs in each contest against the Golden Grizzlies for a 52-dig weekend. Czhen Beneby and Lakyn Graves led Milwaukee with six blocks apiece, while Alexis Lewis had three on the week.
- » Green Bay is 5-9 on the season and were 2-0 this weekend with a sweep at Youngstown State. After hosting the Panthers on Tuesday, the Phoenix will welcome Purdue Fort Wayne to the Kress Center this weekend.
- » The Panthers have dropped their last four to Green Bay over the past two seasons, but still own a 50-25 all-time Division I record against Green Bay. In games played at Green Bay, Milwaukee is 21-11.
- » IU Indianapolis dropped their first two Horizon League matches this weekend. The Jaguars were swept on Friday by the Raiders but took the first two sets on Saturday before suffering their own reverse sweep.
- » In 15 all-time meetings, the Panthers are 11-4, including a 6-2 record at the Klotsche Center. MKE is currently on a three-match winning streak against IU Indianapolis.

HEAD TO HEAD

CATEGORY	MILWAUKEE	GREEN BAY	IU INDIANAPOLIS
Kills (Team/Opp)	652/743	614/685	739/691
Errors (Team/Opp)	282/293	285/288	358/273
Attempts (Team/Opp)	2,078/2,081	1,961/1,938	2,006/1,894
Attacking Percent (Team/Opp)	.178/.216	.168/.205	.190/.221
Assists (Team/Opp)	587/692	562/644	690/633
Assists per Set (Team/Opp)	10.7/12.6	10.4/11.9	11.3/10.4
Service Aces (Team/Opp)	71/86	78/75	119/110
Digs (Team/Opp)	824/949	823/932	800/751
Total Blocks (Team/Opp)	91/120	80/102	99.5/145

**General Information**

Location	Milwaukee, Wis.
Founded	1885
Enrollment	24,836
Nickname	Panthers
Colors	Black and Gold
Facility / Capacity	Klotsche Center / 2,500
Affiliation	NCAA Division I
Conference	Horizon League
Chancellor	Mark Mone
Director of Athletics	Amanda Braun
Associate AD/SWA	Kathy Litzau
Ticket Office Phone	414-229-5886

Team History

First Year of Volleyball	1973
All-Time Record	1160-699-9
First Year in Division I	1990
NCAA Division I Record	593-446
NCAA Tournament Appearances	10
Last NCAA Appearance	2013
Last NCAA Opponent	Wisconsin
Result	L, 3-0

Volleyball Staff

Head Coach	Susie Johnson
	Idaho State '93
Office Phone	414-229-4483
Associate Head Coach	Lindsey Vanden Berg
	Milwaukee '03
Assistant Coach	Katie Adams
	Parkside '19
Athletic Trainer	Katie Wissing
	Saint Louis '21

Media Relations

Director of Athletic Communications	Sean Engel
Office/Cell Phone	414-435-8118
E-mail	engelsf@uwm.edu
Assistant AD Communications	Chris Zills
Communications Assistant	Chip Kindt
Content Creation & Strategy	Rachel Klemp
Multimedia Services	Andrew Levesque
Athletics Website	www.mkepanthers.com

2024 HORIZON LEAGUE STANDINGS

Team	Horizon League			Overall			Strk
	W	L	Pct.	W	L	Pct.	
Wright State	2	0	1.000	10	3	.769	W3
Milwaukee	2	0	1.000	7	7	.500	W2
Green Bay	2	0	1.000	5	9	.357	W2
Cleveland State	1	1	.500	10	3	.769	L1
Purdue Fort Wayne	1	1	.500	8	7	.533	W1
Robert Morris	1	1	.500	6	7	.462	L1
Northern Kentucky	1	1	.500	5	8	.385	W1
Youngstown State	0	2	.000	6	8	.429	L2
IU Indianapolis	0	2	.000	6	9	.400	L2
Oakland	0	2	.000	4	10	.286	L2

AROUND THE HORIZON LEAGUE

Sept. 27	Cleveland State 3, Northern Kentucky 2 Green Bay 3, Youngstown State 0 Wright State 3, IU Indianapolis 0 Robert Morris 3, Purdue Fort Wayne 0
Sept. 28	Purdue Fort Wayne 3, Robert Morris 1 Northern Kentucky 3, Cleveland State 1 Green Bay 3, Youngstown State 1 Wright State 3, IU Indianapolis 2
Oct. 1	Youngstown State at Robert Morris 5:00 pm Northern Kentucky at Wright State 5:00 pm Oakland at Cleveland State 5:00 pm IU Indianapolis at Purdue Fort Wayne 6:00 pm
Oct. 4	Youngstown State at Northern Kentucky 5:00 pm Cleveland State at Wright State 5:00 pm Robert Morris at Oakland 5:00 pm Purdue Fort Wayne at Green Bay 6:00 pm
Oct. 5	Youngstown State at Northern Kentucky 1:00 pm Cleveland State at Wright State 1:00 pm Robert Morris at Oakland 1:00 pm Purdue Fort Wayne at Green Bay 2:00 pm
Oct. 11	Robert Morris at IU Indianapolis 5:00 pm Wright State at Youngstown State 5:00 pm Green Bay at Cleveland State 5:00 pm Oakland at Purdue Fort Wayne 6:00 pm
Oct. 12	Robert Morris at IU Indianapolis 1:00 pm Wright State at Youngstown State 1:00 pm Green Bay at Cleveland State 1:00 pm Oakland at Purdue Fort Wayne 1:00 pm
Oct. 18	IU Indianapolis at Youngstown State 4:00 pm Northern Kentucky at Robert Morris 5:00 pm Purdue Fort Wayne at Cleveland State 5:00 pm Oakland at Green Bay 6:00 pm

IT'S "MILWAUKEE"

A lot has been made of the correct way to talk about the University of Wisconsin-Milwaukee, especially in the area of athletics. It would be appreciated if you would refer to the athletics teams as either "Milwaukee" or "MKE".

Milwaukee Athletics is making an effort to brand itself as "Milwaukee" instead of other references. Please avoid UW-Milwaukee, UW-M, Wisc.-Mil, UW-MIL, Wisconsin-Milwaukee, etc.

Your cooperation in this matter is greatly appreciated.

2024 HORIZON LEAGUE PRESEASON POLL

School (1st place votes)	Points
1. Wright State (9)	99
2. Northern Kentucky (1)	85
3. Milwaukee	73
4. Green Bay	71
5. Cleveland State	63
6. Oakland	53
7. Purdue Fort Wayne	38
T8. IU Indianapolis	26
T8. Robert Morris	26
10. Youngstown State	16

MILWAUKEE VOLLEYBALL ROSTER

No.	Name	Pos.	Ht.	Yr.	Hometown (High School/College)	Pronunciation
1	Tatum Catalano	OH/RS	6-0	Sr.	Germantown, Wis. (Germantown)	TAY-tum cat-uh-LAH-no
2	Bri Geurts	RS/MB	6-0	Sr.	De Pere, Wis. (De Pere)	GERTS
3	Lakyn Graves	MB	6-2	Sr.	Menomonee Falls, Wis. (Sussex Hamilton/Omaha)	LAY-kin
4	Josie Johnson	S	5-7	Jr.	Burlington, Wis. (Waterford Union)	
5	Milica Tomic	S	5-7	Fr.	Dyer, Ind. (Lake Central)	mil-LEET-za TOE-meech
6	Alexis Lewis	MB	6-1	Sr.	Roscoe, Ill. (Hononegah Community/Memphis)	
7	Gabby Wire	OH	5-9	Fr.	Crystal Lake, Ill. (Crystal Lake South)	
8	Jenna Soerens	OH/RS	5-11	Fr.	Oostburg, Wis. (Oostburg)	SOAR-ins
9	Kati Goba	DS	5-4	So.	Mukwonago, Wis. (Wisconsin Lutheran)	GOE-buh
10	Czhen Beneby	MB	6-3	Sr.	West Palm Beach, Fla. (Alexander W. Dreyfoos/Virginia)	ZEN BEN-uh-bee
11	Natalie Schmitz	OH	6-1	Jr.	Ham Lake, Minn. (Blaine)	
12	Bella Lipski	MB	6-2	So.	Milwaukee, Wis. (Divine Savior Holy Angels)	
13	Kara Erdmann	DS	5-6	Jr.	Forreston, Ill. (Forreston)	
14	Madi Malone	OH	6-0	Sr.	Newark, Ill. (Newark)	
15	Emily Hansen	OH/RS	5-10	Fr.	Mayville, Wis. (Mayville)	
16	Rachel Scott	RS	6-2	Jr.	Belvidere, Ill. (Belvidere North)	
17	Hallie Cook	DS/L	5-8	Jr.	Springfield, Mo. (Springfield Catholic/UNC Greensboro)	HAL-lee

Head Coach: Susie Johnson (18th season)**Associate Head Coach:** Lindsey Vanden Berg (18th season)**Assistant Coach:** Katie Adams (first season)**Athletic Trainer:** Katie Wissing (third season)**Strength & Conditioning:** Bennett Reed (second season)

TELEVISION/RADIO ROSTER



Tatum
Catalano



Bri
Geurts



Lakyn
Graves



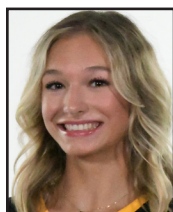
Josie
Johnson



Milica
Tomic



Alexis
Lewis



Gabby
Wire



Jenna
Soerens



Kati
Goba



Czhen
Beneby



Natalie
Schmitz



Bella
Lipski



Kara
Erdmann



Madi
Malone



Emily
Hansen



Rachel
Scott



Hallie
Cook



Susie
Johnson

TEAM BREAKDOWN

Class

Seniors – 6
Juniors – 5
Sophomores – 2
Freshmen – 4

Position

Hitters – 8
Middles – 4
Setters – 2
Defensive – 3

Home State

Wisconsin – 8
Illinois – 5
Florida – 1
Indiana – 1
Minnesota – 1
Missouri – 1

Height

6-2 Plus – 4
6-0 to 6-1 – 5
5-8 to 5-11 – 4
5-4 to 5-7 – 4

Status

Returners – 11
Freshmen – 4
Transfers – 2

GAME NOTES

LOOKING AT GREEN BAY

Milwaukee or Green Bay will suffer their first Horizon League loss on Tuesday with both teams coming off a pair of weekend wins at Oakland and Youngstown State, respectively. Only Wright State started off league play unblemished.

The Phoenix won 3-0 and 3-1 at YSU this weekend and were led by Cora Behnke with 28 kills and Katie Schulz with 26 kills. Calli Gentry had 71 assists, while Emma Best led the Phoenix with five aces on the pair of weekend wins.

Best also led Green Bay with 26 digs, while Abby Gardner added 22 of her own. Up front, the defensive effort saw Ellie Kurpeikis and Diane Pichelman with seven blocks apiece against the Penguins.

Now in year seven at Green Bay, Abbey Sutherland crossed over 100 wins with the Phoenix earlier this season and is closing in on 300 for her career with two previous stops before joining GB.

Green Bay is currently ninth of 10 teams in the Horizon League with just 80 blocks, but by comparison are in the top half of the league in covering the floor with 823 digs, just one behind Milwaukee among league teams.

LOOKING AT IU INDIANAPOLIS

The Jaguars come to town on Friday after visiting Purdue Fort Wayne on Tuesday looking for their first league win of 2024. The Jaguars lost both matches at home to open conference play this past weekend against Wright State, as the Raiders won 3-0 on Friday and 3-2 on Saturday.

Under the direction of now second-year head coach Andrew Kroger, the Jaguars are already at six wins in 2024 after just a nine-win 2023 campaign. IU Indy is one of the top serving teams in the nation, leading the Horizon League and are 18th among Division I programs in aces per set with just shy of two at 1.95.

Grace Purichia leads the way at 0.58 aces per set as her 35 aces lead the Horizon League and places her 13th nationally in aces per set and sixth in total aces nationwide. The setter is also 16th nationally in total assists and sits second in the Horizon League with her 523 entering play this week.

Megan Ostrowski is tops in the league in hitting percentage at .382 through the team's first 15 matches. Ostrowski's 130 kills are second on the team to Elle Patterson, who is fourth in the Horizon with 181.

Three players are battling for the team lead in digs as Addie Evans (141) holds a one-dig lead over Purichia and Patterson with 140 each. IU Indy is towards the top of the league in blocking, led by Ostrowski with 42, Carly Doros with 39, and Kate White with 23.

UP NEXT

After a three-match week to begin October, Milwaukee heads back on the road next weekend to take on the Norse of Northern Kentucky in Highland Heights on Oct. 11-12.

Last season, Milwaukee won both matches against the Norse, who were selected to finish second in the league preseason poll.

LIVING ON THE EDGE

Dating back to last season, the Panthers have won nine consecutive five-set matches, with their last five-set loss coming to Villanova on Aug. 26, 2023. During the 2024 season, Milwaukee has gone 4-0 in five-set decisions.

The stretch of five-set wins is the second longest in program history, with the longest five-set match winning streak coming back during the 1998 and 1999 seasons. Milwaukee won the final eight five-set decisions in 1998, and first two in 1999.

FIRST-YEAR HIGHS AT OAKLAND

During the team's five-set win over Oakland on Sept. 28, a pair of freshmen recorded career-best marks as Gabby Wire tallied 13 kills, while setter Milica Tomic had a career-high 32 assists.

MILICA, THE ACE

Putting together a strong game from behind the service line against Oakland on Sept. 27, Milica Tomic had five service aces, which placed her in a tie for fourth in terms of single-match success in five-set decisions in Panther history.

Her five aces also place her in a tie for second among all Horizon League players for aces in a match in 2024, while she is currently the only player to record five aces in a conference match this season.

1,000 CAREER DIGS

During the team's win over Iowa, Milwaukee senior Madi Malone recorded the 1,000th dig of her career as she makes a push towards the top-10 in the program's Division I history in digs. Currently the 10th position is occupied by Sam Trawitzke, who finished her career following the 2011 season with 1,412 digs.

Malone had a career-high 319 digs in 2023, after 289 as a sophomore and 292 during her freshman campaign.

ERDMANN'S NEW HIGH

After setting a career-high with 31 digs against Western Illinois on Aug. 31 earlier this season, Kara Erdmann pushed right past that number with a 36-dig effort in the team's five-set win over Illinois State on Sept. 13.

The 36 digs tied the third highest dig total in a five-set match in program history. The mark equals Sarah Schrader's mark from 2023 and Myanna Ruiz, who had 36 in a five-setter in 2015. The program record for digs in a five-set match is 41 set by Becky Peters back in 2005.

Erdmann is currently fifth in the nation with 275 digs this season, which also places her 13th nationally in digs per set at 5.00 in 2024.

REVERSE SWEEP

On Sept. 13 against Illinois State, the Milwaukee volleyball team reverse swept the Redbirds with 25-20, 25-18, 15-7 set wins in the latter portion of the match. The Panthers recorded their second reverse sweep of the season on Sept. 27 at Oakland, winning 26-24, 25-19, and 15-10.

Milwaukee had two reverse sweeps in 2023 with one coming in non-conference play against Air Force on Sept. 15 and another later in the year against Purdue Fort Wayne in Horizon League action on Oct. 20 in Indiana.

The Panthers did not have any reverse sweeps in 2022 and had two back in 2021 against Western Michigan on Sept. 17, and one on Oct. 1 against Wright State.

LEADING THE TEAM

While many teams rely on one to two hitters to lead their offense, Milwaukee has had five different student-athletes lead the Panthers in kills through the team's season thus far.

Madi Malone has led the team in kills on seven occasions while Natalie Schmitz has led the team three times, Alexis Lewis and Bri Geurts have both led the team in kills on two occurrences this season. Rachel Scott has also led the team in kills once in 2024.

SERVING UP AN ACE

After collecting just three service aces in limited service action as a junior, Lakyn Graves has been the top servers for Milwaukee thus far with a team-best 20 service aces, which places her fourth in the Horizon League.

BUILDING BLOCKS

Milwaukee had a strong showing in the blocking game during two of their three matches of the 2024 Panther Invitational with the team tallying a season-high 14 against Illinois State on Sept. 13 and adding another 13 against Iowa two days later.

Against the Redbirds Lakyn Graves led the team with eight, followed by Alexis Lewis with six and Rachel Scott with four. Later in the weekend, Scott had a

GAME NOTES

career-best with eight with Graves adding six and Bella Lipski getting in on the action with four blocks.

MALONE DOUBLING UP

With seven double-doubles on the season, Madi Malone now has 43 double-doubles for her career.

Malone has 1,267 kills and is now in sixth on the Milwaukee all-time kills list and is 28 behind the fifth position occupied by Julie Kolinske with 1,295.

Her 1,046 digs are also the most among active players, as are her 108 matches played, 403 sets played, and 68 service aces.

RECORD-SETTING CROWD

On August 30, the Panthers hosted their first-ever top-five opponent with the Stanford Cardinal visiting the Klotsche Center. With a total of 1,581 in attendance, including a student crowd of 968, the attendance figure broke the previous mark that had stood since the 2006 season, when Milwaukee and No. 11 Wisconsin drew a crowd of 1,121 in the final match of that season's Panther Invitational.

500 CAREER MATCHES

On Sunday, Sept. 1, Susie Johnson coached her 500th career match as the head coach of the Panthers becoming the first head coach in Milwaukee Division I history to reach that milestone. Tom Pleyte, who coached the team from 1978 and through Milwaukee's first three Division I seasons from 1990-92, is the program's all-time leader having served as head coach for 807 matches. Kathy Litzau, who followed Pleyte and preceded Johnson led Milwaukee 423 times.

Last season, Johnson earned her 272nd head coaching victory to become the department's all-time leader in wins in Division I history. She also recorded her 500th win as a Panther, earning 226 victories in 10 seasons as an assistant, while earning her 274th win as head coach against Purdue Fort Wayne on September 23.

NATIONAL RANKING

Milwaukee finished the 2023 regular season second in the nation with 1,608 kills, and after its postseason match against Cleveland State in the Horizon League First Round, added to its total to finish the year with 1,661, which was 22nd most in all of Division I in 2023 following the conclusion of the NCAA Championship.

The Panthers also finished 2023 with 1,546 assists, which was also 22nd in Division I, while the team finished 52nd in total blocks with 279.5. Both of those numbers were tops in the Horizon League. With a .255 team hitting percentage, Milwaukee led the Horizon League and finished the year 39th among 332 DI programs.

TOUGH SLATE ON TAP

Milwaukee is scheduled to play a tough slate of competition in 2024 including six teams that qualified for the 2023 NCAA Championship. The list includes Stanford (Aug. 30), Southern Methodist (Sept. 5), Weber State (Sept. 8), Wisconsin (Sept. 10), Wright State (Oct. 18-19), and Marquette (Oct. 22).

The 2024 American Volleyball Coaches Association Preseason Poll included Wisconsin (No. 3), Stanford (No. 5), Marquette (No. 24), as well as Southern Methodist and Loyola Marymount, who were receiving votes in the preseason tally.

PRESEASON POLL

After finishing the 2023 Horizon League schedule in a tie for second place with a 13-5 record, the Panthers were selected to finish third in the 2024 preseason poll, amassing 73 points and finishing just ahead of Green Bay with 71 points.

Wright State was selected to repeat as champions of the Horizon League with nine first-place votes and 99 points overall, while Northern Kentucky received the final first-place vote and recorded 85 points. Cleveland State took fifth with 63 points, while Oakland was projected to take the final playoff berth with 53 points.



SUSIE JOHNSON

HEAD COACH

18TH SEASON / 28TH OVERALL

IDAHO STATE '93

Head Coaching Records

Head Coaching Record at Milwaukee: 292-219

Head Coaching Conference Record at Milwaukee: 183-89

Head Coaching Career Record: 312-266

Career Coaching Records

Total Career Record at Milwaukee: 518-289

Total Career Conference Record at Milwaukee: 301-103

Total Career Record: 563-372

Postseason Appearances / Awards

NCAA Tournament Berths: 10 *

20-Win Seasons: 16 *

Regular Season Titles: 14 *

League Coach of the Year Titles: 5 *

Coaching Timeline

2007-present - Milwaukee, Head Coach *

1997-2006 - Milwaukee, Assistant Coach *

1995-96 - Indiana State, Assistant Coach

1993-94 - Parkside, Head Coach

Panthers Record When ...

At Home	2-2
On the Road	3-3
At a Neutral Site	2-2
vs. Horizon	2-0

In Three-Set Matches	0-5
In Four-Set Matches	3-2
In Five-Set Matches	4-0

Winning the First Set	2-2
Leading After Two Sets	1-0
Trailing After Two Sets	2-3
Tied After Two Sets	4-2

On Weekdays	2-5
On Weekends	5-2

On Mondays	0-0
On Tuesdays	0-1
On Wednesdays	0-0
On Thursdays	0-2
On Fridays	2-2
On Saturdays	3-2
On Sundays	2-0

In August	1-1
In September	6-6
In October	0-0
In November	0-0

2024 SCHEDULE AND RESULTS

Date	Opponent	Score	Set-by-Set	Overall	Horizon	Time	Att.
Aug. 30	No. 5 Stanford	L, 0-3	20-25, 25-27, 17-25	0-1		1:29	1,581

NORTHERN ILLINOIS TOURNAMENT (DeKalb, Ill.)

Aug. 31	vs. Western Illinois	W, 3-1	25-23, 22-25, 28-26, 25-23	1-1		2:26	104
Sept. 1	at Northern Illinois	W, 3-2	22-25, 25-18, 19-25, 25-19, 15-13	2-1		2:18	401

SOUTHERN METHODIST TOURNAMENT (Dallas, Texas)

Sept. 5	at RV Southern Methodist	L, 0-3	12-25, 20-25, 12-25	2-2		1:17	217
Sept. 6	vs. Loyola Marymount	L, 1-3	25-12, 21-25, 15-25, 19-25	2-3		1:51	450
Sept. 7	vs. Weber State	W, 3-1	25-27, 25-20, 25-21, 25-13	3-3		1:59	150
Sept. 10	at Wisconsin	L, 0-3	13-25, 13-25, 14-25	3-4		1:16	7,096

PANTHER INVITATIONAL (Milwaukee, Wis.)

Sept. 13	ILLINOIS STATE	W, 3-2	21-25, 22-25, 25-20, 25-18, 15-7	4-4		2:25	503
Sept. 14	ST. THOMAS	L, 0-3	21-25, 22-25, 16-25	4-5		1:20	459
Sept. 15	IOWA	W, 3-1	25-21, 26-24, 23-25, 26-24	5-5		2:06	411

CHICAGO CUP (Chicago, Ill.)

Sept. 19	at DePaul	L, 0-3	19-25, 18-25, 21-25	5-6		1:21	512
Sept. 21	vs. UIC	L, 1-3	25-21, 22-25, 16-25, 15-25	5-7		2:01	193
Sept. 27	at Oakland *	W, 3-2	17-25, 23-25, 26-24, 25-19, 15-10	6-7	1-0	2:30	140
Sept. 28	at Oakland *	W, 3-2	13-25, 25-22, 25-22, 21-25, 15-10	7-7	2-0	2:23	122

Oct. 1	at Green Bay *					6:00 pm	
Oct. 4	IU INDIANAPOLIS *					6:00 pm	
Oct. 5	IU INDIANAPOLIS *					2:00 pm	
Oct. 11	at Northern Kentucky *					5:00 pm	
Oct. 12	at Northern Kentucky *					1:00 pm	
Oct. 18	WRIGHT STATE *					6:00 pm	
Oct. 19	WRIGHT STATE *					2:00 pm	
Oct. 22	at Marquette					7:00 pm	
Oct. 25	YOUNGSTOWN STATE *					6:00 pm	
Oct. 26	YOUNGSTOWN STATE *					2:00 pm	
Oct. 29	GREEN BAY *					6:00 pm	

Nov. 1	at Purdue Fort Wayne *					6:00 pm	
Nov. 2	at Purdue Fort Wayne *					1:00 pm	
Nov. 8	at Robert Morris *					5:00 pm	
Nov. 9	at Robert Morris *					12:00 pm	
Nov. 15	CLEVELAND STATE *					6:00 pm	
Nov. 16	CLEVELAND STATE *					2:00 pm	

HORIZON LEAGUE CHAMPIONSHIP

Nov. 22-24	Horizon League Tournament ^						
------------	-----------------------------	--	--	--	--	--	--

Home Games in **BOLD** | * Horizon League Match | ^ Horizon League Tournament



2024 MILWAUKEE MATCH-BY-MATCH

Date	Opponent	SP	Attack				Set			Serve				Recept			DIG	Blocking				BHE	POINTS	SCORE
			K	E	TA	PCT	A	TA	PCT	SA	SE	TA	PCT	RE	TA	PCT		BS	BA	BE	TOTAL			
08/30/2024	Stanford	3	29	15	79	.177	28	85	.329	5	6	63	.905	7	60	.883	32	1	8	0	5.0	0	39.0	0-3
08/31/2024	vs Western Ill.	4	55	16	228	.171	42	236	.178	9	10	99	.899	4	94	.957	91	5	14	0	12.0	0	76.0	3-1
09/01/2024	at NIU	5	58	19	183	.213	49	192	.255	6	10	105	.905	10	93	.892	77	1	10	0	6.0	2	70.0	3-2
09/05/2024	at SMU	3	23	13	68	.147	21	66	.318	2	9	46	.804	8	63	.873	10	0	4	2	2.0	0	27.0	0-3
09/06/2024	vs LMU (CA)	4	44	22	123	.179	39	114	.342	5	3	81	.963	7	78	.910	37	1	16	1	9.0	0	58.0	1-3
09/07/2024	vs Weber St.	4	54	18	162	.222	47	155	.303	6	9	99	.909	5	69	.928	76	0	14	1	7.0	0	67.0	3-1
09/10/2024	at Wisconsin	3	20	15	102	.049	19	105	.181	3	3	42	.929	8	68	.882	27	1	2	0	2.0	0	25.0	0-3
09/13/2024	Illinois St.	5	56	19	175	.211	51	175	.291	10	11	108	.898	3	88	.966	84	4	20	2	14.0	0	80.0	3-2
09/14/2024	St. Thomas (MN)	3	42	10	111	.288	42	111	.378	2	4	61	.934	9	68	.868	47	1	2	1	2.0	0	46.0	0-3
09/15/2024	Iowa	4	60	22	189	.201	50	169	.296	8	1	99	.990	4	92	.957	80	3	20	1	13.0	0	81.0	3-1
09/19/2024	at DePaul	3	34	20	124	.113	30	124	.242	4	5	59	.915	5	69	.928	33	1	0	0	1.0	0	39.0	0-3
09/21/2024	vs UIC	4	47	34	170	.076	47	175	.269	1	11	79	.861	4	88	.955	75	3	8	0	7.0	0	55.0	1-3
09/27/2024	at Oakland	5	63	27	173	.208	58	172	.337	6	11	106	.896	5	97	.948	76	1	12	0	7.0	0	76.0	3-2
09/28/2024	at Oakland	5	67	32	191	.183	64	182	.352	4	8	99	.919	7	101	.931	79	3	2	3	4.0	0	75.0	3-2
Totals		55	652	282	2078	.178	587	2061	.285	71	101	1146	.912	86	1128	.924	824	25	132	11	91.0	2	814.0	
Opponents		55	743	293	2081	.216	692	2131	.325	86	100	1228	.919	71	1045	.932	949	42	156	13	120.0	2	949.0	

Team Averages

Sets Played	Kills per set	Assists per set	Service aces per set	Digs per set	Blocks per set	Points per set	Ball handling error per set	Reception errors per set
55	11.85	10.67	1.29	14.98	1.65	14.80	0.04	1.56

ACTIVE CAREER LEADERS

Matches Played

Madi Malone	108
Bri Geurts	96
Josie Johnson	77
Natalie Schmitz	77

Consecutive Matches Played

Madi Malone	108
Josie Johnson	74
Natalie Schmitz	74

Sets Played

Madi Malone	403
Bri Geurts	341
Josie Johnson	288
Natalie Schmitz	284

Kills

Madi Malone	1,267
Natalie Schmitz	767
Bri Geurts	491

Double-Figure Kills

Madi Malone	66
Natalie Schmitz	41
Bri Geurts	13

Digs

Madi Malone	1,046
Kara Erdmann	699
Josie Johnson	441

Double-Figure Digs

Madi Malone	56
Kara Erdmann	28
Kati Goba	10
Josie Johnson	9

Total Blocks

Bri Guerts	184
Lakyn Graves	170*
Czhen Beneby	142*
Madi Malone	116

* - Milwaukee Statistics Only

Assists

Josie Johnson	1,432
Milica Tomic	1232
Kara Erdmann	120

Double-Doubles

Madi Malone	43
Josie Johnson	9
Milica Tomic	4

Service Aces

Madi Malone	68
Josie Johnson	45
Natalie Schmitz	35



2024 OVERALL STATISTICS

			Attack					Set		Serve			Dig			Blocking							
##	Player	SP	K	K/S	E	TA	PCT	A	A/S	SA	SE	SA/S	RE	DIG	DIG/S	BS	BA	TOT/S	BLK/S	BE	BHE	PTS	
2	Geurts, Bri	53	100	1.89	44	267	.210	4	0.08	0	0	0.00	0	25	0.47	0	14	14	0.26	5	0	107.0	
3	Graves, Lakyn	55	87	1.58	40	230	.204	4	0.07	20	25	0.36	1	32	0.58	10	33	43	0.78	2	0	133.5	
4	Johnson, Josie	55	15	0.27	0	68	.221	270	4.91	9	14	0.16	0	68	1.24	0	0	0	0.00	0	1	24.0	
5	Tomic, Milica	55	3	0.05	0	33	.091	232	4.22	13	12	0.24	0	102	1.85	0	0	0	0.00	0	1	16.0	
6	Lewis, Alexis	53	72	1.36	41	202	.153	1	0.02	0	0	0.00	0	5	0.09	6	27	33	0.62	1	0	91.5	
7	Wire, Gabby	6	13	2.17	5	39	.205	0	0.00	0	0	0.00	1	5	0.83	0	0	0	0.00	0	0	13.0	
9	Goba, Kati	55	0	0.00	1	16	-.063	25	0.45	2	7	0.04	18	93	1.69	0	0	0	0.00	0	0	2.0	
10	Beneby, Czhen	8	14	1.75	10	36	.111	0	0.00	0	1	0.00	0	5	0.63	1	6	7	0.88	0	0	18.0	
11	Schmitz, Natalie	51	135	2.65	55	471	.170	2	0.04	11	18	0.22	9	41	0.80	2	9	11	0.22	1	0	152.5	
12	Lipski, Bella	7	3	0.43	3	11	.000	0	0.00	0	0	0.00	0	0	0.00	0	6	6	0.86	2	0	6.0	
13	Erdmann, Kara	55	1	0.02	1	13	.000	40	0.73	4	2	0.07	12	275	5.00	0	0	0	0.00	0	0	5.0	
14	Malone, Madi	55	162	2.95	64	499	.196	4	0.07	10	11	0.18	24	146	2.65	2	8	10	0.18	0	0	178.0	
15	Hansen, Emily	6	2	0.33	4	9	-.222	0	0.00	0	0	0.00	0	1	0.17	0	1	1	0.17	0	0	2.5	
16	Scott, Rachel	49	45	0.92	14	184	.168	3	0.06	0	0	0.00	0	19	0.39	4	28	32	0.65	0	0	63.0	
17	Cook, Hallie	38	0	0.00	0	0	.000	2	0.05	2	11	0.05	0	7	0.18	0	0	0	0.00	0	0	2.0	
MILWAUKEE		55	652	11.85	282	2078	.178	587	10.67	71	101	1.29	86	824	14.98	25	132	91	1.65	11	2	814.0	
Opponents		55	743	13.51	293	2081	.216	692	12.58	86	100	1.56	71	949	17.25	42	156	120	2.18	13	2	949.0	

2024 HORIZON LEAGUE STATISTICS

			Attack					Set		Serve			Dig			Blocking						PTS
##	Player	SP	K	K/S	E	TA	PCT	A	A/S	SA	SE	SA/S	RE	DIG	DIG/S	BS	BA	TOT/S	BLK/S	BE	BHE	
2	Geurts, Bri	9	18	2.00	8	44	.227	1	0.11	0	0	0.00	0	3	0.33	0	0	0	0.00	0	0	18.0
3	Graves, Lakyn	10	10	1.00	7	31	.097	0	0.00	3	4	0.30	1	8	0.80	2	4	6	0.60	2	0	17.0
4	Johnson, Josie	10	4	0.40	0	8	.500	53	5.30	0	2	0.00	0	10	1.00	0	0	0	0.00	0	0	4.0
5	Tomic, Milica	10	0	0.00	0	2	.000	54	5.40	6	1	0.60	0	22	2.20	0	0	0	0.00	0	0	6.0
6	Lewis, Alexis	9	11	1.22	5	28	.214	1	0.11	0	0	0.00	0	0	0.00	1	2	3	0.33	0	0	13.0
7	Wire, Gabby	5	13	2.60	5	39	.205	0	0.00	0	0	0.00	1	5	1.00	0	0	0	0.00	0	0	13.0
9	Goba, Kati	10	0	0.00	0	2	.000	7	0.70	1	2	0.10	2	18	1.80	0	0	0	0.00	0	0	1.0
10	Beneby, Czhen	7	13	1.86	8	32	.156	0	0.00	0	1	0.00	0	5	0.71	1	5	6	0.86	0	0	16.5
11	Schmitz, Natalie	6	13	2.17	4	46	.196	0	0.00	0	3	0.00	0	7	1.17	0	0	0	0.00	1	0	13.0
12	Lipski, Bella	2	0	0.00	0	0	.000	0	0.00	0	0	0.00	0	0	0.00	0	1	1	0.50	0	0	0.5
13	Erdmann, Kara	10	0	0.00	1	2	-.500	6	0.60	0	1	0.00	2	52	5.20	0	0	0	0.00	0	0	0.0
14	Malone, Madi	10	39	3.90	19	103	.194	0	0.00	0	2	0.00	2	21	2.10	0	1	1	0.10	0	0	39.5
16	Scott, Rachel	6	9	1.50	2	27	.259	0	0.00	0	0	0.00	0	3	0.50	0	1	1	0.17	0	0	9.5
17	Cook, Hallie	7	0	0.00	0	0	.000	0	0.00	0	3	0.00	0	1	0.14	0	0	0	0.00	0	0	0.0
MILWAUKEE		10	130	13.00	59	364	.195	122	12.20	10	19	1.00	12	155	15.50	4	14	11	1.10	3	0	151.0
Opponents		10	115	11.50	53	356	.174	110	11.00	12	9	1.20	10	153	15.30	9	30	24	2.40	1	1	151.0

2024 SEASON BESTS

ATTACK PERCENTAGE (min. 10 kills)

Team: .288 vs. St. Thomas (Sept. 14)
Opponent: .515 at SMU (Sept. 5)
Individual: .360 (Geurts) at Oakland (Sept. 27)

KILLS

Team: 67 at Oakland (Sept. 28)
Opponent: 67 vs. Iowa (Sept. 15)
Individual: 23 (Malone) at Oakland (Sept. 27)

ASSISTS

Team: 64 at Oakland (Sept. 28)
Opponent: 63 vs. Iowa (Sept. 15)
Individual: 32 (Tomic) at Oakland (Sept. 28)

DIGS

Team: 91 vs. Western Illinois (Aug. 31)
Opponent: 113 vs. Western Illinois (Aug. 31)
Individual: 36 (Erdmann) vs. Illinois State (Sept. 13)

SERVICE ACES

Team: 10 vs. Illinois State (Sept. 13)
Opponent: 10 at Northern Illinois (Sept. 1)
Individual: 5 (Tomic) at Oakland (Sept. 27)

TOTAL BLOCKS

Team: 14 vs. Illinois State (Sept. 13)
Opponent: 17 vs. UIC (Sept. 21)
Individual: 8 (Graves & Scott) Once Each

2024 SEASON & CAREER HIGHS

1 Tatum Catalano | Sr. | OH/RS**2024 Season Highs**

Kills n/a
 Attempts n/a
 Hitting % n/a
 Blocks n/a
 Digs n/a
 Aces n/a
 Assists n/a

Career Highs

Kills 4 (Twice)
 Attempts 12 (9/9/22 vs. LSU)
 Hitting % .. 1.000 [1-0-1] (10/7/22 vs. CSU)
 Blocks 4 (Twice)
 Digs 4 (10/8/22 vs. OAK)
 Aces same
 Assists 1 (Twice)

4 Josie Johnson | Jr. | S**2024 Season Highs**

Kills 3 (8/31 vs. Western Ill.)
 Attempts 16 (8/31 vs. Western Ill.)
 Hitting % 1.000 (8/30 vs. Stanford)
 Blocks n/a
 Digs 11 (9/13 vs. Illinois State)
 Aces 3 (9/13 vs. Illinois State)
 Assists 28 (9/27 at Oakland)

Career Highs

Kills 3 (Three Times)
 Attempts same
 Hitting % ... 1.000 [2-0-2] (10/13/23 at Oak.)
 Blocks 1 (Three Times)
 Digs 16 (9/15/23 vs. Air Force)
 Aces 3 (Twice)
 Assists 32 (9/8/23 vs. Western Illinois)

7 Gabby Wire | Fr. | OH**2024 Season Highs**

Kills 13 (9/28 at Oakland)
 Attempts 39 (9/28 at Oakland)
 Hitting %205 (9/28 at Oakland)
 Blocks n/a
 Digs 5 (9/28 at Oakland)
 Aces n/a
 Assists n/a

Career Highs

Kills same
 Attempts same
 Hitting % same
 Blocks same
 Digs same
 Aces same
 Assists same

2 Bri Geurts | Sr. | RS/MB**2024 Season Highs**

Kills 12 (9/27 at Oakland)
 Attempts 28 (9/13 vs. Illinois State)
 Hitting %500 (9/14 vs. St. Thomas)
 Blocks 3 (Twice)
 Digs 6 (8/31 vs. Western Ill.)
 Aces n/a
 Assists 2 (9/13 vs. Illinois State)

Career Highs

Kills 15 (9/8/23 vs. Western Illinois)
 Attempts 30 (9/17/22 vs. New Mexico St.)
 Hitting %750 [3-0-4] (Twice)
 Blocks 9 (10/8/22 vs. Oakland)
 Digs 6 (Three Times)
 Aces 2 (Five Times)
 Assists 3 (Twice)

5 Milica Tomic | Fr. | S**2024 Season Highs**

Kills 2 (9/21 vs. UIC)
 Attempts 15 (8/31 vs. Western Ill.)
 Hitting %667 (9/21 vs. UIC)
 Blocks n/a
 Digs 14 (9/27 at Oakland)
 Aces 5 (9/27 at Oakland)
 Assists 32 (9/28 at Oakland)

Career Highs

Kills same
 Attempts same
 Hitting % same
 Blocks same
 Digs same
 Aces same
 Assists same

8 Jenna Soerens | Fr. | OH/RS**2024 Season Highs**

Kills n/a
 Attempts n/a
 Hitting % n/a
 Blocks n/a
 Digs n/a
 Aces n/a
 Assists n/a

Career Highs

Kills same
 Attempts same
 Hitting % same
 Blocks same
 Digs same
 Aces same
 Assists same

3 Lakyn Graves | Sr. | MB**2024 Season Highs**

Kills 12 (9/13 vs. Illinois State)
 Attempts 30 (8/31 vs. Western Ill.)
 Hitting %500 (9/14 vs. St. Thomas)
 Blocks 8 (9/13 vs. Illinois State)
 Digs 5 (9/27 at Oakland)
 Aces 3 (Four Times)
 Assists 1 (Four Times)

Career Highs

Kills same
 Attempts 30 (Twice)
 Hitting %625 [5-0-8] (9/12/23 vs. DePaul)
 Blocks 13 (9/3/21 vs. Arizona State)
 Digs 6 (8/25/23 at West. Michigan)
 Aces same
 Assists 1 (Eight Times)

6 Alexis Lewis | Sr. | MB**2024 Season Highs**

Kills 10 (Twice)
 Attempts 24 (9/7 vs. Weber State)
 Hitting %444 (9/28 at Oakland)
 Blocks 7 (9/6 vs. LMU)
 Digs 2 (9/21 vs. UIC)
 Aces n/a
 Assists 1 (9/28 at Oakland)

Career Highs

Kills 14 (10/8/21 vs. Wichita St.)
 Attempts 35 (10/15/21 at Tulane)
 Hitting % 1.000 [1-0-1] (Twice)
 Blocks same
 Digs 6 (9/3/22 at TCU)
 Aces 1 (8/27/22 vs. East. Washington)
 Assists 1 (Five Times)

9 Kati Goba | So. | L/DS**2024 Season Highs**

Kills n/a
 Attempts 4 (8/31 vs. Western Ill.)
 Hitting % n/a
 Blocks n/a
 Digs 13 (Twice)
 Aces 1 (Twice)
 Assists 4 (9/27 at Oakland)

Career Highs

Kills 1 (Twice)
 Attempts same
 Hitting % 1.000 [1-0-1] (10/27/23 vs. YSU)
 Blocks 1 (9/1/23 vs. Mont. St.)
 Digs 16 (11/10/23 vs. Cleveland State)
 Aces 1 (Five Times)
 Assists 8 (10/28/23 vs. Robert Morris)

2024 SEASON & CAREER HIGHS

10 Czhen Beneby | Sr. | MB/RS**2024 Season Highs**

Kills 9 (9/27 at Oakland)
 Attempts 20 (9/27 at Oakland)
 Hitting %167 (9/28 at Oakland)
 Blocks 5 (9/27 at Oakland)
 Digs 3 (9/28 at Oakland)
 Aces n/a
 Assists n/a

Career Highs

Kills 15 (11/1/22 vs. PFW)
 Attempts 26 (11/5/22 at CSU)
 Hitting % .. .800 [8-0-10] (9/23/22 vs. YSU)
 Blocks 6 (Four Times)
 Digs 5 (10/22 at YSU)
 Aces same
 Assists 1 (Four Times)

13 Kara Erdmann | Jr. | DS**2024 Season Highs**

Kills 1 (9/7 vs. Weber State)
 Attempts 5 (Twice)
 Hitting % 1.000 (9/7 vs. Weber State)
 Blocks n/a
 Digs 36 (9/13 vs. Illinois State)
 Aces 2 (9/15 vs. Iowa)
 Assists 6 (9/7 vs. Weber State)

Career Highs

Kills 1 (Three Times)
 Attempts same
 Hitting % 1.000 [1-0-1] (Three Times)
 Blocks same
 Digs same
 Aces 2 (Twice)
 Assists 6 (Twice)

16 Rachel Scott | Jr. | RS**2024 Season Highs**

Kills 9 (9/28 at Oakland)
 Attempts 26 (9/15 vs. Iowa)
 Hitting %429 (9/1 at Northern Ill.)
 Blocks 8 (9/15 vs. Iowa)
 Digs 3 (Twice)
 Aces n/a
 Assists 1 (Twice)

Career Highs

Kills 9 (Twice)
 Attempts 15 (9/23/23 vs. PFW)
 Hitting % . .750 [3-0-4] (9/22/23 vs. IUPUI)
 Blocks same
 Digs 6 (9/29/23 at Robert Morris)
 Aces same
 Assists 2 (Twice)

11 Natalie Schmitz | Jr. | OH**2024 Season Highs**

Kills 17 (Twice)
 Attempts 52 (8/31 vs. Western Ill.)
 Hitting %327 [17-1-49] (9/7 vs. Weber St.)
 Blocks 3 (9/6 vs. LMU)
 Digs 7 (Three Times)
 Aces 4 (9/7 vs. Weber State)
 Assists 1 (Twice)

Career Highs

Kills 17 (Six Times)
 Attempts .. 54 (9/8/23 vs. Western Illinois)
 Hitting % .647 [11-0-17] (10/28/23 vs. RMU)
 Blocks 4 (Four Times)
 Digs 8 (10/6/23 vs Northern Ky.)
 Aces same
 Assists 2 (9/12/23 vs. DePaul)

14 Madi Malone | Sr. | OH**2024 Season Highs**

Kills 23 (9/27 at Oakland)
 Attempts 56 (9/27 at Oakland)
 Hitting %348 (9/14 vs. St. Thomas)
 Blocks 3 (9/21 vs. UIC)
 Digs 21 (9/7 vs. Weber State)
 Aces 3 (8/31 vs. Western Ill.)
 Assists 2 (Twice)

Career Highs

Kills 29 (10/1/21 vs. WSU)
 Attempts 66 (10/1/21 vs. WSU)
 Hitting % .467 [9-2-15] (9/11/21 at C-Ark)
 Blocks 4 (9/1/23 vs. Cal. Baptist)
 Digs same
 Aces 6 (10/27/23 vs. Youngstown St.)
 Assists 3 (Four Times)

17 Hallie Cook | Jr. | DS/L**2024 Season Highs**

Kills n/a
 Attempts n/a
 Hitting % n/a
 Blocks n/a
 Digs 2 (9/14 vs. St. Thomas)
 Aces 1 (Twice)
 Assists 1 (Twice)

Career Highs

Kills 16 (9/30 vs. Chattanooga)
 Attempts 48 (9/30 vs. Chattanooga)
 Hitting % . .500 [3-1-4] (9/22/22 vs. SC St.)
 Blocks 3 (9/16 vs. UNC Asheville)
 Digs 13 (Twice)
 Aces 2 (Five Times)
 Assists 2 (Twice)

12 Bella Lipski | So. | MB**2024 Season Highs**

Kills 3 (9/15 vs. Iowa)
 Attempts 8 (9/15 vs. Iowa)
 Hitting %125 (9/15 vs. Iowa)
 Blocks 4 (9/15 vs. Iowa)
 Digs n/a
 Aces n/a
 Assists n/a

Career Highs

Kills 4 (10/27/23 vs. Youngstown St.)
 Attempts 8 (Twice)
 Hitting % .. .500 [4-0-8] (10/27/23 vs. YSU)
 Blocks 5 (10/21/23 at IUPUI)
 Digs 2 (10/21/23 at IUPUI)
 Aces same
 Assists same

15 Emily Hansen | Fr. | OH/RS**2024 Season Highs**

Kills 1 (Twice)
 Attempts 4 (Twice)
 Hitting % n/a
 Blocks 1 (8/31 vs. Western Ill.)
 Digs 1 (9/7 vs. Weber State)
 Aces n/a
 Assists n/a

Career Highs

Kills same
 Attempts same
 Hitting % same
 Blocks same
 Digs same
 Aces same
 Assists same